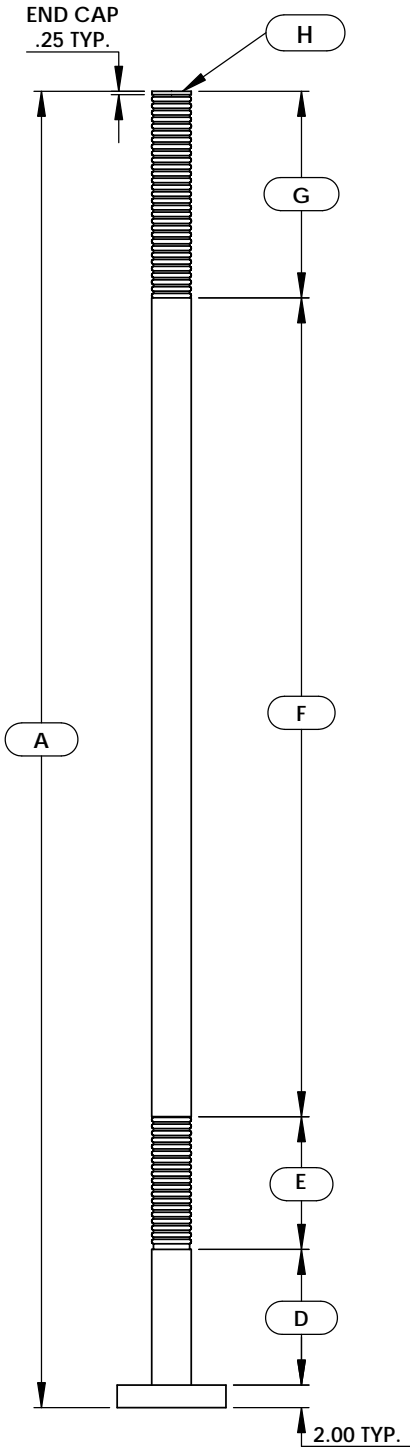
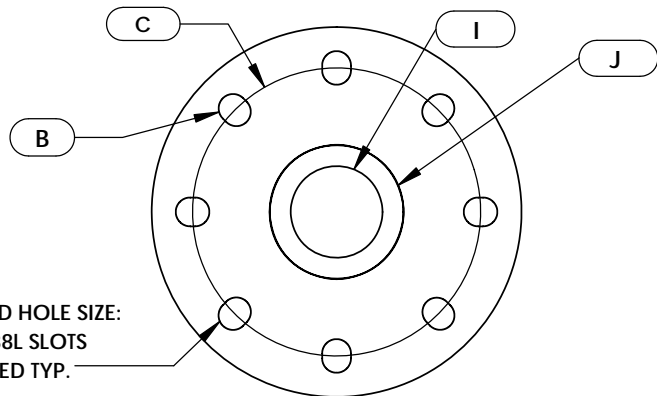


Kelso Eduction Tube Order Form



A	TOTAL LENGTH	
B	BOLT HOLE PATTERN (4,6 or 8)	
C	BOLT CIRCLE	
D	RIGID SECTION 1	
E	FLEX SECTION 1 (12 INCH STANDARD)	
F	RIGID SECTION 2	
G	FLEX SECTION 2 (18 INCH STANDARD)	
H	END CAP (YES or NO)	
I	TUBE INSIDE DIAMETER	
J	NOMINAL OUTSIDE DIAMETER (2" or 3")	
QUANTITY ORDERED		
CONTACT NAME: COMPANY: PHONE: EMAIL: SHIPPING ADDRESS:		
COMMENTS		



STANDARD HOLE SIZE:
 ϕ .75 X .88L SLOTS
 EQ. SPACED TYP.

Kelso ET (Eduction Tubes) are customer specific and NON RETURNABLE

*****PLEASE BE ADVISED - Material Constructed of High-Density Polyethylene (HDPE) - PLEASE REFERENCE YOUR INTERNAL COMPATABILITY GUIDE*****

End caps are not supplied unless specified